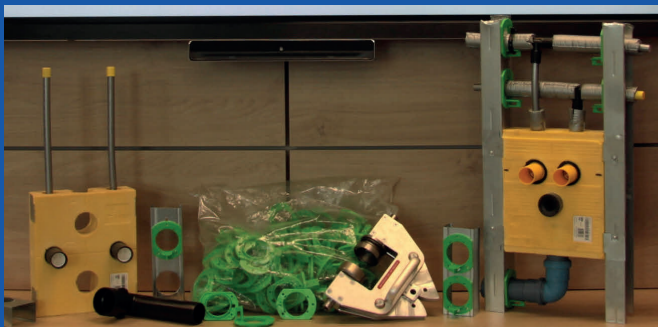


Multibox

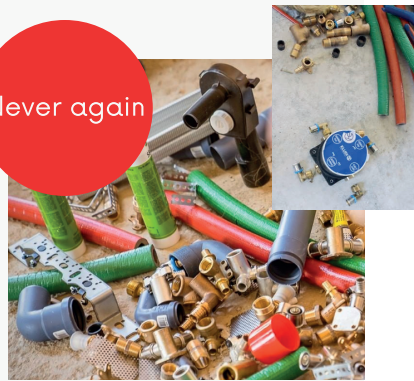
The multibox was developed for simple, fast, safe and standard-compliant sanitary installations in drywalls and on substrates such as masonry, drywall, wood, concrete and GIS systems.

With the patented box technology, workers can save up to 80% of the assembly time on all water connections for vanities, sinks, showers, bathtubs and washing machines.

The preparation of the sanitary project is very easy, as almost all required components are already installed in the box.



Never again



We are setting new standards in plumbing technology.



One box for all possible construction situations.

One box for washbasins, bathtubs, washing machines, sinks and showers!



Certified for sustainable building and construction!

Statements :

We work with the punching tool in the course of our installation work in drywall construction and are absolutely amazed by it. The simple, fast, safe and precise application makes the pipe laying much easier for us and brings us a great economic advantage during installation.

Alois M., Plumber

We work with the Installationbox at all our construction sites. Thanks to the system installation, the work is very simplified.

Walter Z., Plumber



Notes:

Contact via stephanie@ulsontrading.com

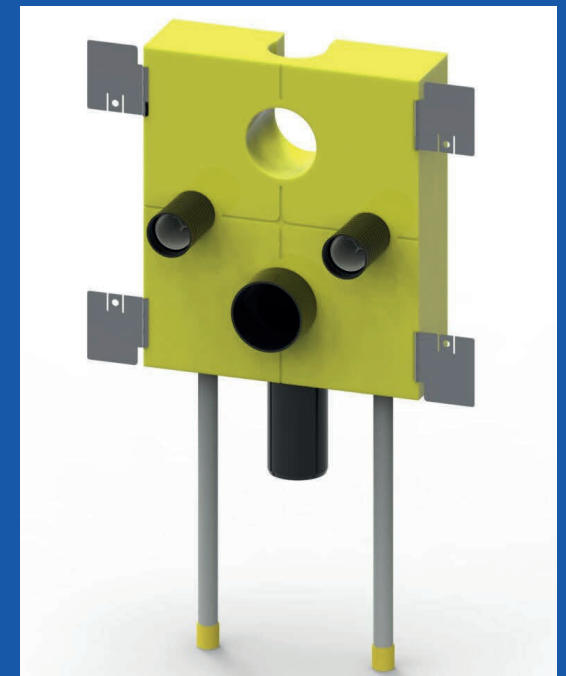
www.ulsontrading.com



PETER ULSON

Multibox

Box technology, developed and produced in Austria.



The world of innovation in plumbing.
That's what it's all about.